

# Hyundai Electric Vehicles

---

Laxmi Intercontinental Pvt. Ltd is the sole authorized distributor of Hyundai Motors since February 2009. After the acquisition of distributorship in 2009, Laxmi Intercontinental started working in the imports and sales of various Hyundai car models. Currently, it has 11 car models across segments namely Santro, Grand i10, Xcent, Elite i20, i20 Active, Verna, Creta, Tucson, Santa Fe, Ioniq EV and Kona EV.

It is currently a key player in Passenger Car Segment in Nepalese automobile market, and we are proud to deliver high quality Hyundai cars and offer better mobility solutions to our valued customers. In Nepal, Hyundai vehicles have been able to win hearts of many and are known for durability, reliability, fuel efficiency, after sales service along with **BEST RESALE VALUE**. We not only aim to provide better car, but also quality after sales service to our valued Hyundai customers-we consider customer's satisfaction as our top priority. For this, we have established state-of-art showrooms and technologically-superior after sales service facilities which are at par with Hyundai's global standard in all major cities across Nepal.



Currently what we have with us:

Hyundai Kona EV



Hyundai Ioniq EV



FULL LINE-UP

# 2020

Creating a full line-up of eco-friendly vehicles  
by 2020

CARS

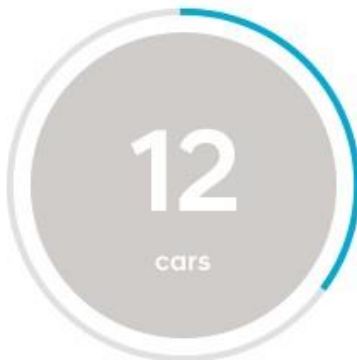
# 22

Innovating a full range of Hyundai's 22 eco-  
friendly vehicles

THE WORLD'S

# 2nd

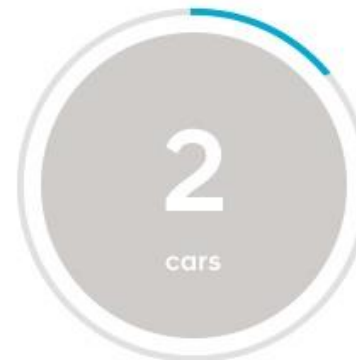
Becoming a global automotive leader in eco-  
friendly vehicles



Hybrid Electric Vehicle



Plug-in Hybrid Electric  
Vehicle



Electric Vehicle



Fuel Cell Electric Vehicle

- Cheaper to Fuel (Running cost of Hyundai EV is approx. Rs 1.5/km as compared to Rs 14-16/km for IC vehicle)
- Less Maintenance
- Driving Performance (Quick response constant torque)
- Lesser Emission (Hybrid) No Emission (EV)
- Safest & Superior Car
- EV Getting Cheaper ( HVB rates has dropped from \$550/kwh to \$150/kwh)
- EV could get better over time (Software upgradation)
- Globally EV projected to save almost 1.5 Million Barrel crude oil production by 2025.
- In few European Countries EV is generating extra revenue by car sharing and smart fleet service.

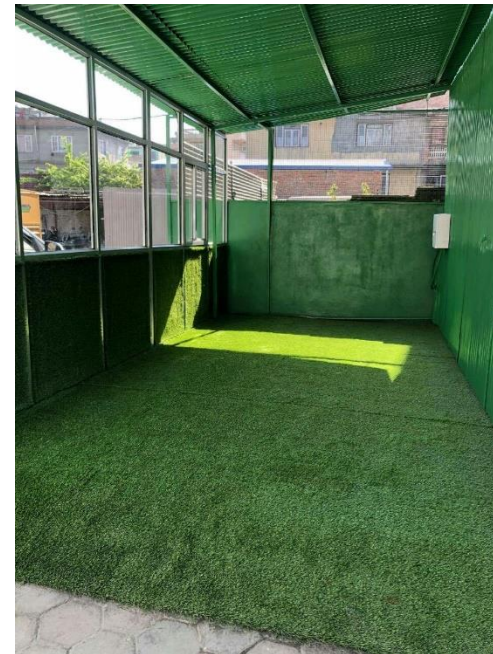
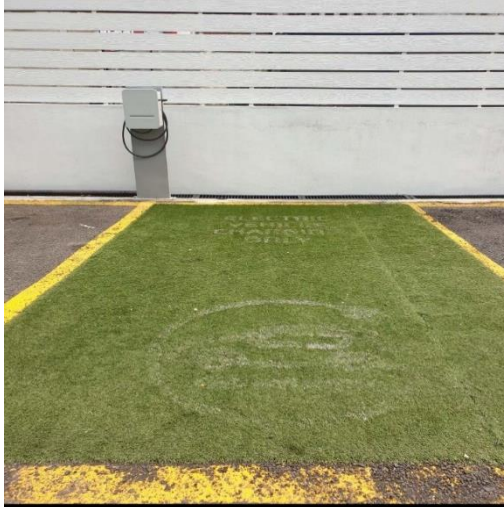
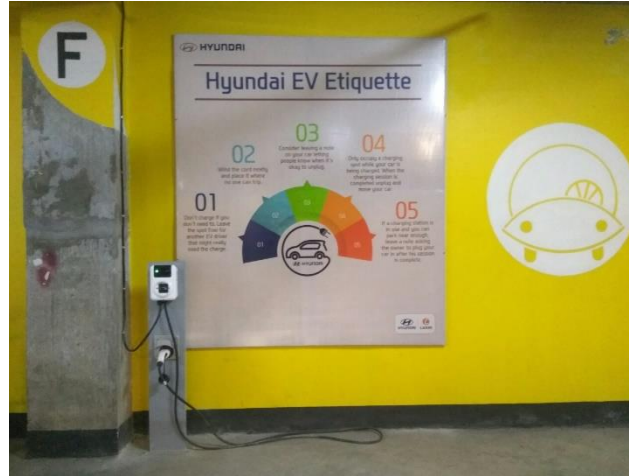
Hardware

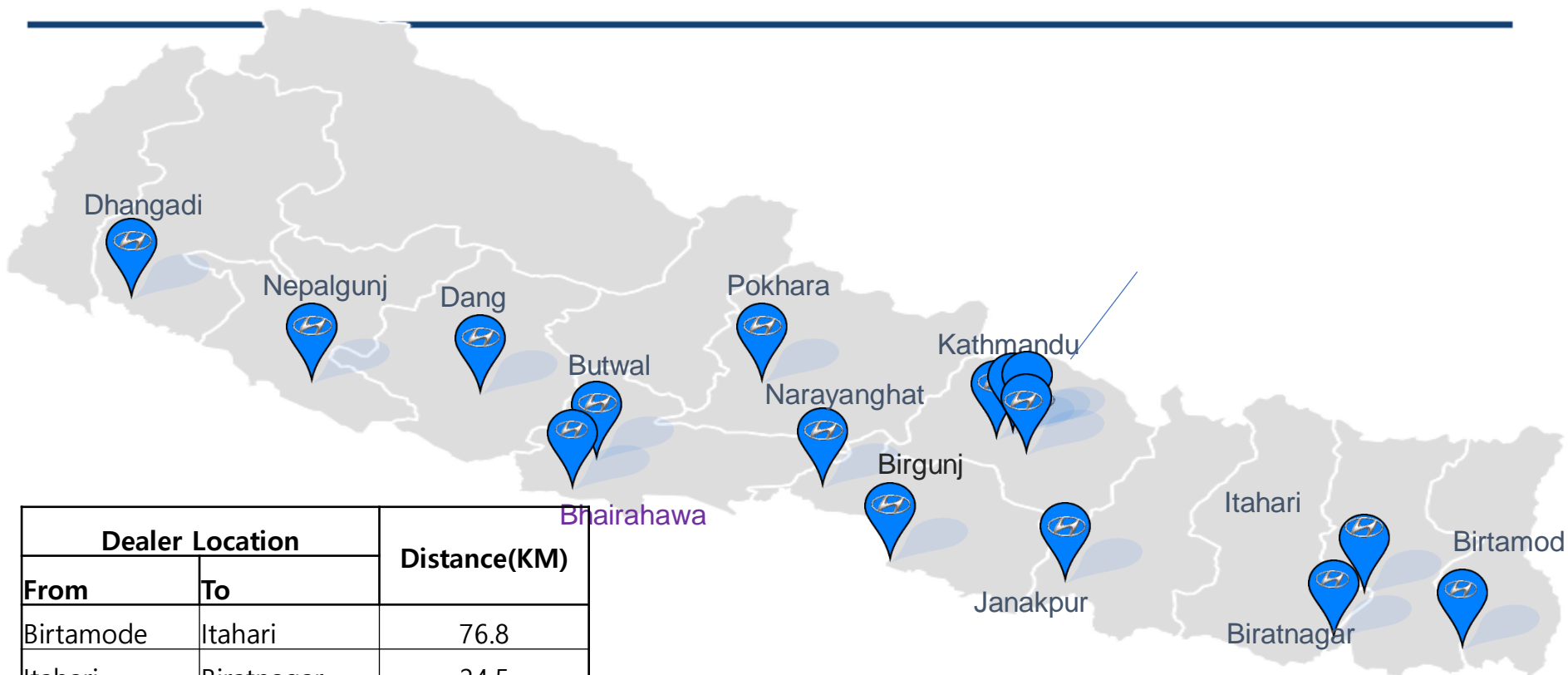
Software

Humanware

1. New Shiva Service Center, Sinamangal
2. LI Services, Dhapasi
3. LI Auto, Kupondol
4. Hyundai Kathmandu Pvt. Ltd. - Thapathali
5. Hyundai Kathmandu Pvt. Ltd. – Naxal
6. LI Quick Service - Tinkune
7. LI Motors, Pokhara
8. Barahi Serevice, Pokhara
9. Waterfront Resort, Pokhara
10. Hotel Barahi - Pokhara
11. LABIM Mall, Pulchowk
12. JW Marriot, Nagpokhari







Dealer Location		Distance(KM)
From	To	
Birtamode	Itahari	76.8
Itahari	Biratnagar	24.5
Itahari	Janakpur	190
Janakpur	Birgunj	158
Birgunj	Narayanghat	130
Narayanghat	Butwal	121
Butwal	Bhairahawa	28
Butwal	Dang	181
Dang	Nepalgunj	116
Nepalgunj	Dhangadhi	183

Each charger is to be installation in a distance range of 200 Km

- Our infrastructure to support (Energy Grid, Transformer ,Wiring upgradation ,Socket Protocol ,Ampere rating household / office charging protocol, Public Charging for Commercial mass transportation).
- Future Adaptability (Cars becoming more smart, efficient ,self power generating , Autonomous technology )

Future Generation will thank us for saving chocolates for them ,as we save earth from being warmer !

Have a Heart, Go Electric !!